

### Protein ladder, pre-stained, BenchMark™



50



Suitable as a standard to monitor electrophoresis or electrophoretic transfer from the gel to a membrane in western blots.

4 to 20% Tris-glycine gel 5µL/lane

Coupling of the chromophores to the proteins affects their apparent molecular weight in SDS-PAGE relative to unstained standards. Each band in the pre-stained ladder is calibrated against the unstained BenchMark™ protein ladder on a 4 to 20% Tris-Glycine gel and the apparent molecular weight of each lot is reported on the product profile. The pre-stained protein ladder should only be used to determine an approximate size molecular weight.

The BenchMark™ pre-stained protein ladder offers:

- Proteins covalently bound to a blue dye for easy visualisation
- The fourth protein band from the top coupled with a pink dye for easy orientation and to ensure proper identification of each protein
- Affinity-purified proteins to provide sharp bands and clear background
- Easy-to-use format for direct application to an SDS-PAGE
- Sufficient reagent for visualising 100 mini-gel applications or 50 large gel applications following western transfer
- Sufficient reagent for visualising 50 mini-gel applications or 25 large gel applications during electrophoresis

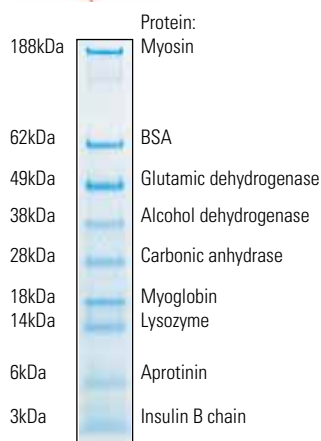
It consists of 10 proteins ranging in apparent molecular weight from ~10kDa to 190kDa. It is designed for use with Tris-Glycine gels.

Catalogue No	Quantity
<b>VX10748010</b>	2 x 250µL

### Pre-stained standard, SeeBlue®



50



Protein:  
Myosin

Easily monitor the progress of your gel run and is an excellent tool for judging western transfer efficiency.

Apparent molecular weights of SeeBlue® pre-stained standard on a NuPAGE® Novex 4 to 12% Bis-Tris gel w/MES

Can be used with NuPAGE®, Tris-Glycine, and Tricine gels.

Includes:

- 9 polypeptides that resolve into sharp, tight blue bands in the range of 4kDa to 250kDa (depending upon buffer system)
- An excellent indicator for judging western transfer efficiency
- A ready-to-use format-no mixing, heating, or reducing required

Note: This standard is pre-reduced and does not contain reducing reagents in the loading buffer.

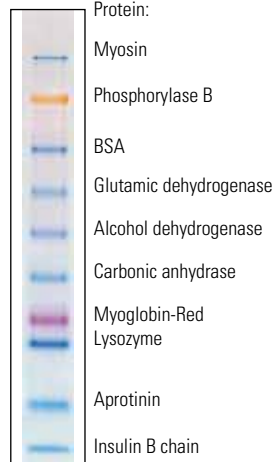
Pre-stained standard for SDS-PAGE

Catalogue No	Quantity
<b>VXLC5625</b>	500µL

### Protein standard, SeeBlue® Plus2, pre-stained



50



Apparent molecular weights of SeeBlue® Plus2 pre-stained standard on a NuPAGE® Novex 4 to 12% Bis-Tris gel w/MES

The SeeBlue® Plus2 pre-stained standard contains 10 proteins: eight blue-dyed and two with contrasting colours providing easier band identification. The SeeBlue® Plus2 standard allows you to easily visualise molecular weight ranges during electrophoresis and quickly evaluate western transfer efficiency. It can be used with NuPAGE®, Tris-Glycine, and Tricine gels. The SeeBlue® Plus2 standard offers:

- 10 polypeptides resolved into eight blue and two coloured bands in the range of 4kDa to 250kDa (depending upon buffer system)
- Immediate, unambiguous band identification
- A ready to use format-no mixing, heating, or reducing required

Note: This standard is pre-reduced and does not contain reducing reagents in the loading buffer.

Pre-stained coloured standard for SDS-PAGE

Catalogue No	Quantity
<b>VXLC5925</b>	500µL

✓ Fisher Scientific UK Green Apple Award Winner

✓ ISO 14001 Environmental Accreditation

✓ WEEE compliant

✓ Recycle 83% of our General waste

✓ Collect ~400,000 bottles per year from customers to re-use & recycle

Green Apple Environmental Award Winner

Certified System

ANAB